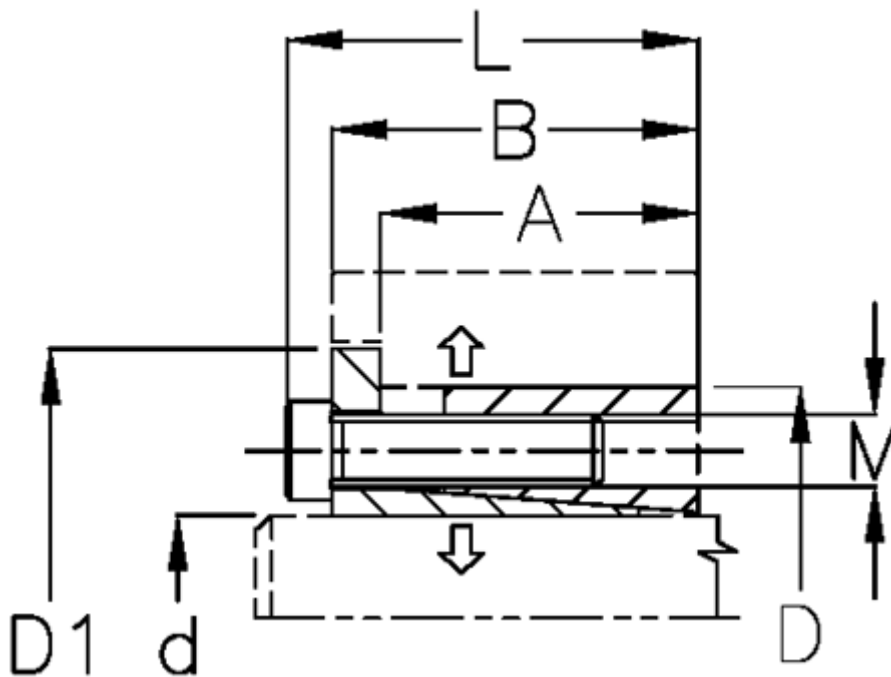


Article number: 434600024

Description: Rota-fix shaft-hub connection ES 24x50  
Steel

Note: Self centering - high transmissible torque. During the clamping, the hub can axially displace.

## Measures



A mm = 22.0

B mm = 28.0

D1 mm = 56

d H8 mm = 24

D mm = 50

Fit tolerance = Aksel h8, Nav H8

F kN torque = 32

L mm = 34

M mm = M6

P N/mm<sup>2</sup> surface pressure on shaft/hub = 100

Surface roughness = R? ? 3.2  $\mu$ m

T N m torque = 390

Ts N m bolt tightening torque = 17